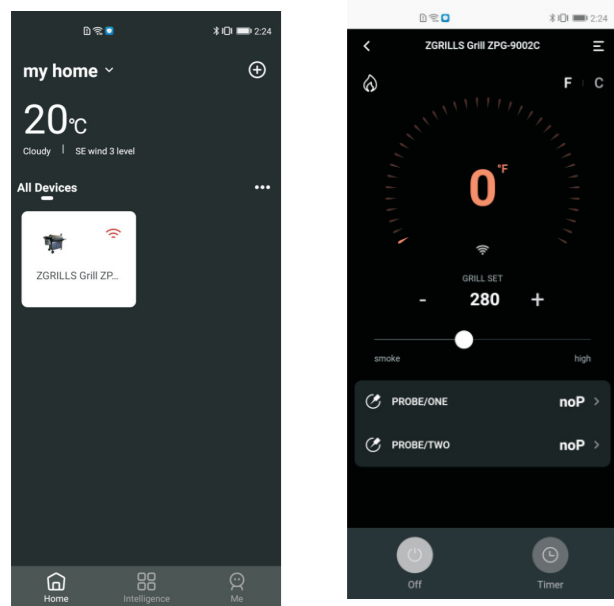
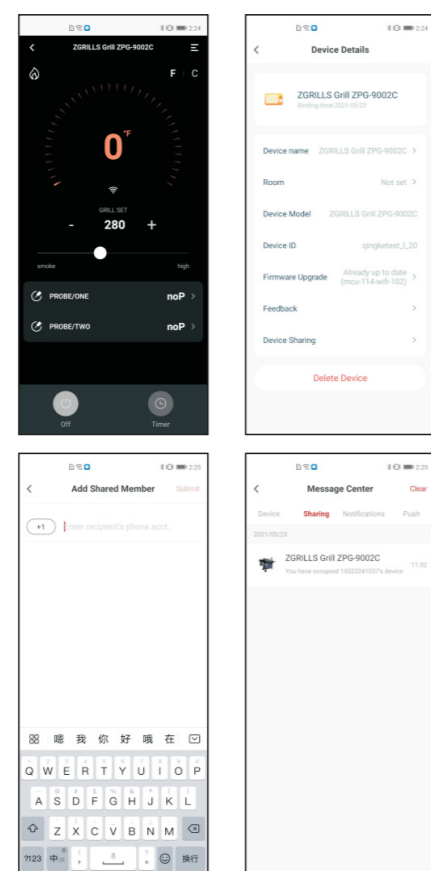


## 7.How to control the function of device?



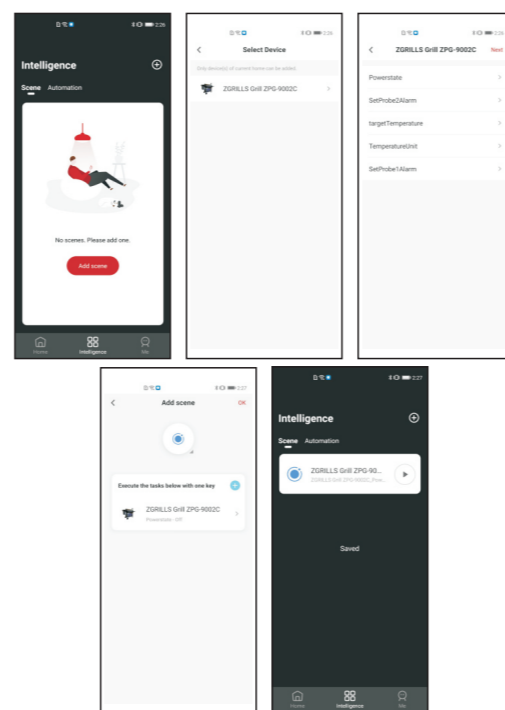
- 1.Click [the device] to be controlled to enter the control page.
- 2.Control the grill temperature between 160 and 450°F (71-232°C).
- 3.The controllers are divided into American and European models, the default temperature unit of American controllers is °F, and the default temperature unit of European controllers is °C.  
You can switch the temperature unit by [F/C] icon, click [F] to change the controller temperature unit to °F, click [C] to change the controller temperature unit to °C.You can switch directly on the control board, and switch on the app must first check the normal connection between the app and the control board.
- 4.You can check the current temperature of the grill.
- 5.The alarm temperature of the probe can be set. When the probe temperature is greater than or equal to the alarm temperature, an alarm box will pop up at the top of the page.
- 6.The grill can be turned off on the app, and the grill cannot be remotely turned on from the app for security reasons.
- 7.Click [ ] in the upper right corner to view the specific information of this device.  
Tip: When controlling the device, you need to turn on Bluetooth or WiFi, and keep it as close to the grill as possible to avoid failure.  
Please refer to the product manual for details.

## 8.How to share a device?



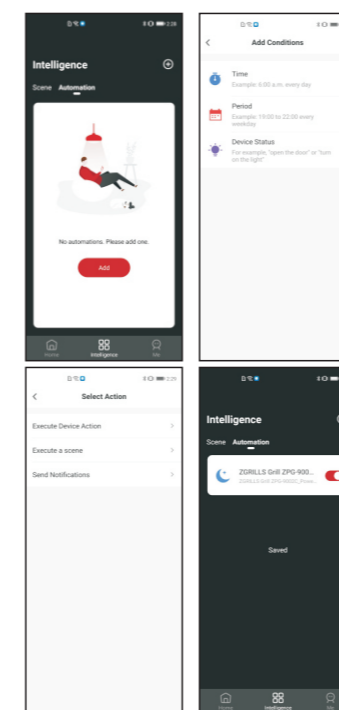
- 1.Click the [ ] in the upper right corner on the control page.
- 2.Click [ ] device sharing ] and enter shared member's account .
- 3.After the shared member receives the sharing notification in [Me-Message Center-Sharing], and then click [Accept].
- 4.Both the sharer and the shared person can control the device.

## 9.How to use the Intelligence function?



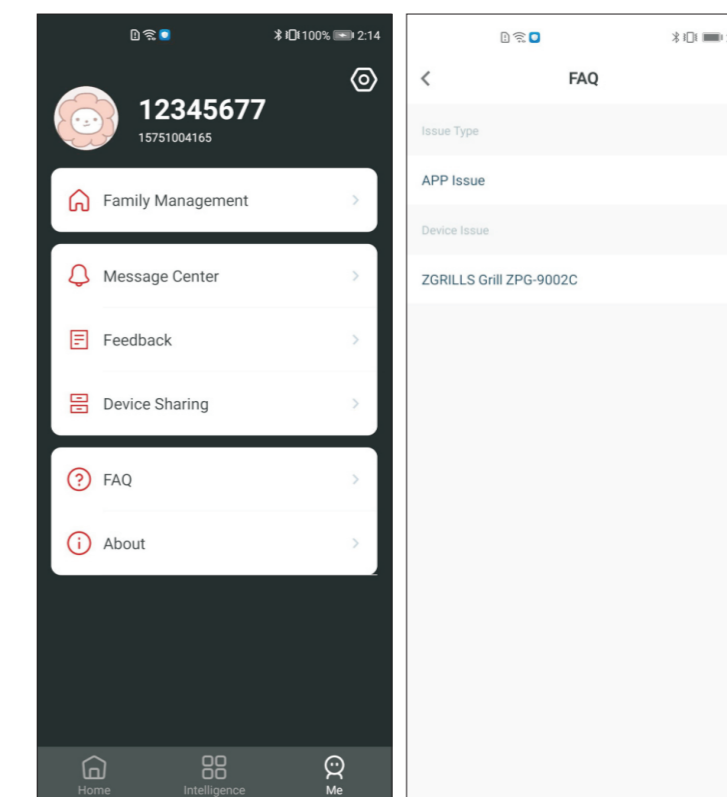
- What is the Scene?  
You can control the status of a group of devices with one click. For example, you can control the switch of multiple devices by clicking a button.
- How to add scene?  
1.On the scene page, click [+] in the upper right corner or [Add scene] .
- 2.Select the device and its specific functions that need to be executed. You can add multiple groups, and edit their names.
  - 3.Click [ok] and save, you can see the saved scenes in the scene list.
  - 4.Click the switch corresponding to the scene in the scene list to execute the set scene function.

## 10.What is automation?



- What is automation?  
When the conditions you set are met, it can automatically trigger the linkage of other devices. For example, power on a device is accompanied by the power page of another device.
- How to add automation?  
1.On the automation page, click [+]in the upper right corner or [Add].
- 2.First add the conditions, and you can choose the time,period or the status of a certain device.
  - 3.Then add the device actions that need to be executed. Click [OK] and save, and you can see the saved automation in the automation list.
  - 4.Click the switch corresponding to the automation in the automation list to execute the set automation function.

## 11.How to deal with usage issues?



- 1.If you encounter app or device usage problems, you can choose to view the related problems in [Me-FAQ].
- 2.Need additional assistance? Please contact the after-sales service.

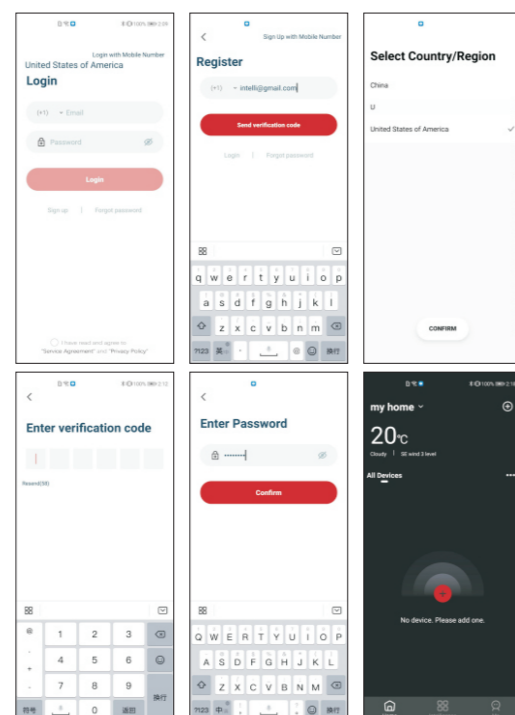
# [ Z GRILLS ] App user manual



## 1.How to download [ Z GRILLS ] ?

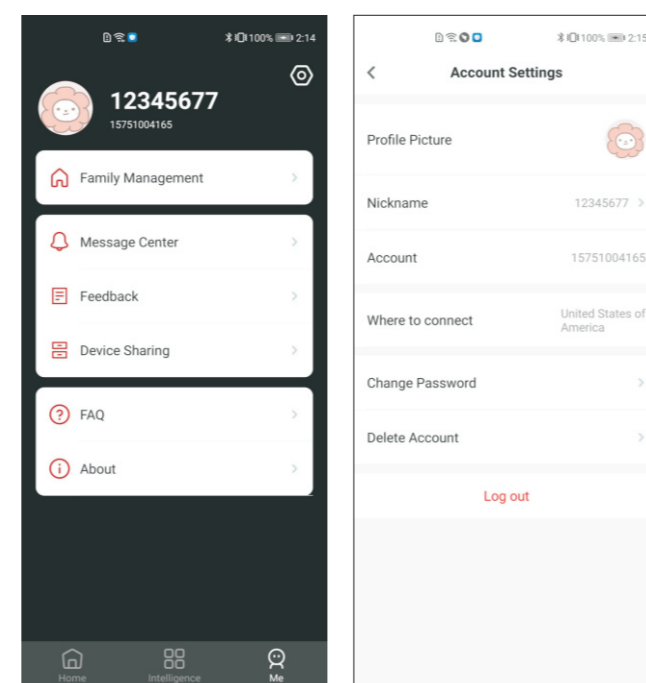
- 1.You can download and install the APP by searching the name of App [Z GRILLS] in the [App Store] or [Google Play].
- 2.After downloading, please review the [User Agreement] and [Privacy Policy] carefully and acknowledge them.

## 2.How to register a new account?



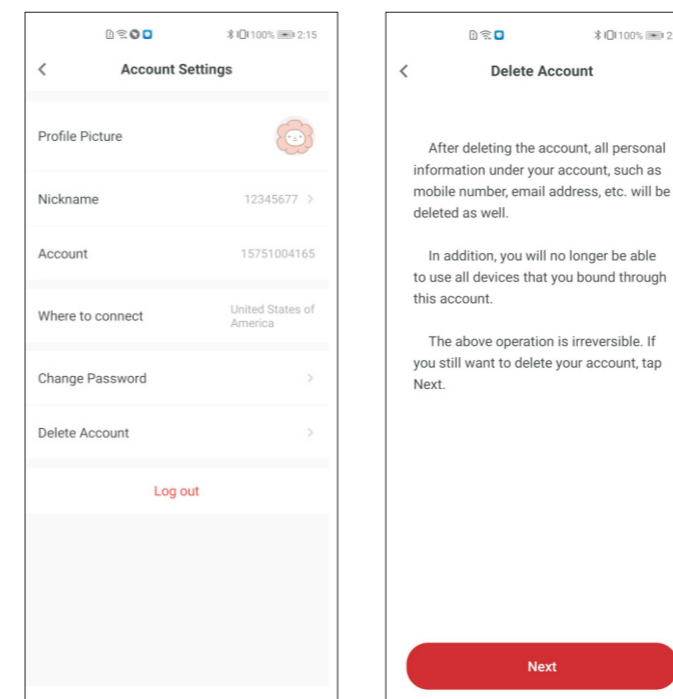
- 1.Open the APP on your mobile and enter the login page, then click [sign up].
- 2.Sign up with your E-mail ID or mobile phone number.
  - a.Enter your mobile phone number, and select the correct country/region code (Note: only for USA-other countries don't support the use of device). Then click [send verification code].
  - b.Enter your E-mail ID, and then click [send verification code].
- 3.Enter verification code you received and then set a password.
- 4.If you have signed up an account successfully, you can log in your account automatically to use this APP.

## 3.How to edit/view personal information?



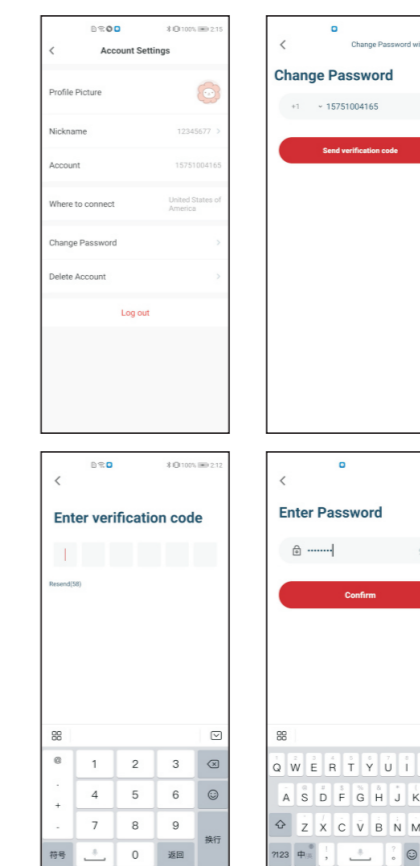
- 1.Click [Me-Account Settings], and you can edit/view personal information.
- 2.You can change your personal avatar and set a new nickname.
- 3.You can view the account and the location of the account.
- 4.You can modify the password or delete the account.
- 5.You can log out of your account or log in.

## 4.How to cancel the account?



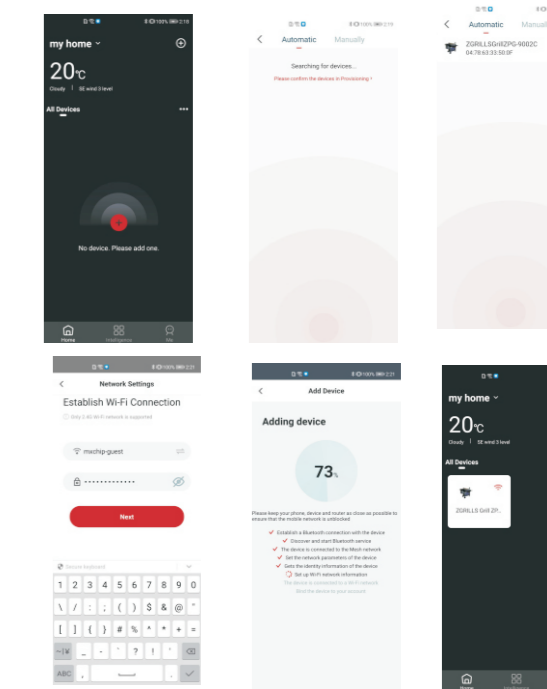
- 1.You can delete the account at [Me-Account Settings-Delete Account].
- 2.After the account is deleted, all information will be erased. This operation is not reversible, please operate with caution.

## 5.How to modify the password?



- 1.You can modify the password at [Me-Account Settings-Change Password]. Then click [send verification code].
- 2.Enter the verification code, and then enter the new password. Click [Confirm]

## 6.How to add a WiFi Router?



- 1.Keep the phone connected to WiFi and turn on Bluetooth.
  - 2.Click [+] in the upper right corner of the homepage. Device will be automatically added by default (you also can choose to add manually).
  - 3.The device enters the state of network distribution.
  - 4.After the device is searched successfully, enter the corresponding WiFi password. Click [Next]
  - 5.You can see the added device in the device list, and you can control the device by entering the control page.
- Note:** When configuring the network, try to keep the mobile phone, device and router close to avoid failure of the network configuration. APP only supports 2.4 network.  
You can set the wireless transmitting frequency through the management background of your wireless router; if the router you are using is a single-band router, you don't need to consider it; if the router you are using is a dual-band wireless router, you can enter the management background of the router to check whether the "dual-band" transmitting is enabled, or you can also enable only the "2.4G band".  
You can determine whether the phone is connected to a 2.4G network or a 5G network by the WiFi name.  
If the initial WiFi name has been changed, you can check the WiFi frequency via phone settings-WLAN (Android only); if you are currently using a 5G network, you need to change the cellular WiFi to 2.4G WiFi before you can further connect and bind to the controller.
