

Primo Kamado Grill Assembly Instructions

Two Adults are Needed to Assemble the Grill.

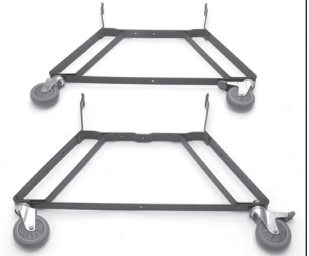
Tools Needed: Box Cutter, 11mm or Adjustable Wrench & Large Phillips Head Screwdriver.

IMPORTANT: DO NOT LIFT GRILL BY THE HINGE WHEN INSERTING INTO CRADLE

1 When the Primo Kamado Grill arrives, select a level area with plenty of working space such as a driveway or parking lot.



2 Open the top of the box, remove the two main cradle parts and set them aside. Note: one has a notched top bar.



3 Remove the two side shelves and four brackets and set them aside.



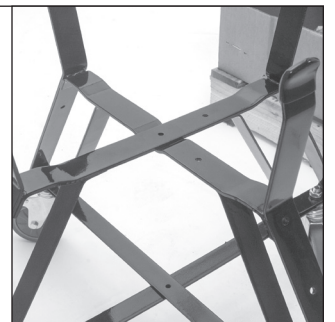
4 Use a box cutter and cut vertically down one of the corners. Firmly pull away the four cardboard sides and discard.



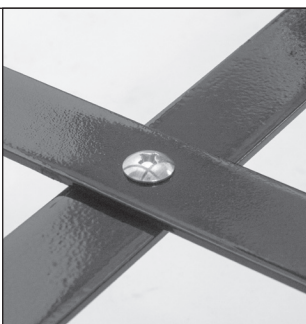
5 Open the grill and remove the ash tool, grate lifter, owners manual and the cradle hardware package.



6 Insert the cradle part with the notched top bar horizontally then turn upright to form an "X" shape and align holes.



7 Insert Phillips Head Screw through the two bottom bars. Use a locking washer, then nut. **FINGER TIGHTEN ONLY AT THIS TIME.**



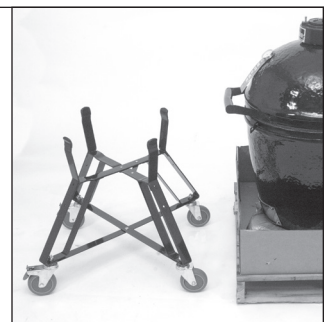
8 Insert a threaded stud into the two top bars. Use a locking washer and one of the nuts. **FINGER TIGHTEN ONLY AT THIS TIME.**



9 Align the metal cross-member bar with the holes and use the remaining threaded studs and nuts. **TIGHTEN ALL FASTENERS FROM PRIOR STEPS.**



10 Align the cradle with the grill. Make sure the locking casters are locked and the furthest from the grill.



11 Remove the internal components of the grill while one person holds the grill in place to prevent it from tipping over.



12 Two adults are required on each side of grill. Lift grill by placing one hand under the bottom of the grill and one on the base just below the hinge. **DO NOT LIFT BY HINGE**

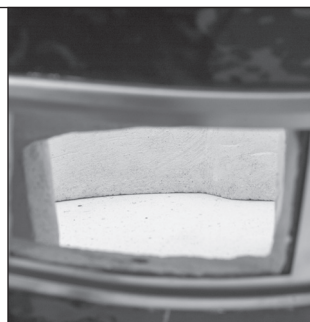
DO NOT LIFT BY THE HINGE



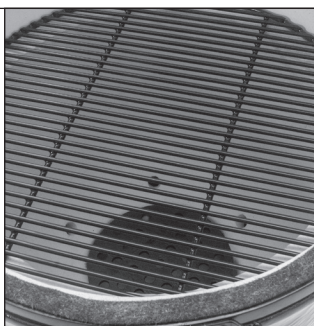
13 Make sure the draft door is centered and the locking casters are in front. You may need to push down on the grill to seat it properly.



14 Insert the fire box into the grill. Make sure the opening in the fire box is aligned with the draft door opening.



15 Insert the charcoal grate in the bottom of the fire box, then add the cooking grate as shown in the photo.



16 Attach the two brackets to the side shelves with 4 screws per shelf in the outermost holes as shown. Repeat for opposite shelf assembly.



17 Attach the side shelves as shown. Side shelves may be folded downward or removed when not in use.



Final Notes After Assembly

- Always pull the grill carefully when moving. **Never push grill to prevent the potential of it tipping it over.**
- When the grill is in the desired location, push down the tabs on the locking casters to set the locks.

